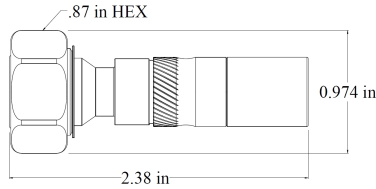
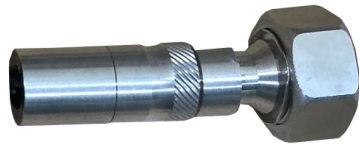


UXP-4MT-14S

4.3-10 Male Torque Connector for 1/4" Superflexible Cable



[Installation video](#)



[Installation instructions](#)



Contact technical support:

1-888-201-6073

techsupport@jmawireless.com

General	Specification
Interface/gender	4.3-10 Male, torque type
Cables supported¹	Andrew FSJ1-50A, FSJ1RK-50B, PTS1-50-P; RFS SCF 14-50J, SCF 14-50JFN; Hansen RF5014S, RF5014SZ; Eupen EC1- 50-HF; Times SPP-250-LLPL, HUBER+SUHNER SUCOFEEED 1/4 HFFR, HUBER+SUHNER SUCOFEEED 1/4 HF, Times SPO-250
Weight	0.220 lbs. 100 g
JMA Weather Protection System	WPS-N-1S

Tools required	JMA part number	Comment
Cable preparation	SP-14S	No coring required
Connector compression	HCG-FRAMESET-14B, HCG-CC	
Torque wrench	TQ-78-F8	8 lbf·ft 10.85 N·m

Frequency band	VSWR	Return loss (dB)
555–1000 MHz (0-1 GHz)	1.02	40
1000–2700 MHz (1-2 GHz)	1.03	38
2700–3800 MHz (2-4 GHz)	1.05	30
3800–6000 MHz (4-6 GHz)	1.08	26

Electrical	Specification	Comment
Connector impedance	50 ohm	
Operating frequency band	DC–6 GHz	
3rd order IMD dynamic, (PIM)	-161 dBc, typical	IEC 60237-02, -3
DC test voltage	1600 V	
Center contact resistance	≤ 0.8 milliohm	
Outer contact continuity	1.0 milliohm max.	
Average power	600 W @ 900 MHz	
Peak power, max.	15 kW	
Insertion loss, typical	0.05 dB	Per connector
Shielding effectiveness	< -120 dB	@ 0-1 GHz

Mechanical	Specification	Comment
Pull force combined	.67 kN >150 lb	Cable limited
Cable retention torque	2 N·m 1.5 lbf·ft	Cable limited
Interface durability	100 cycles	IEC 61169-4:9.5

Environmental	Specification	Test
Operating temperature	-55 °C to +85 °C (-67 °F to 185 °F)	
Storage temperature	-55 °C to +85 °C (-67 °F to 185 °F)	
Accelerated UV	1000 hr	ASTM G154
Immersion test method	Mated & unmated, IP68	IEC 60529:2001 & ANSI/SCTE 60
Water jetting test method	Mated & unmated, IP66	IEC 60529:2001
Mechanical shock test method	Pass	IEC 60068-2-27
Thermal shock test method	Pass	IEC 60068-2-14
Vibration test method	100 m/s ² , 2 Hz to 200 Hz	IEC 61169-1:2003
Corrosion test method	1000 hr	IEC 60068-2-11

¹For cable types not listed, please contact JMA Technical Support.